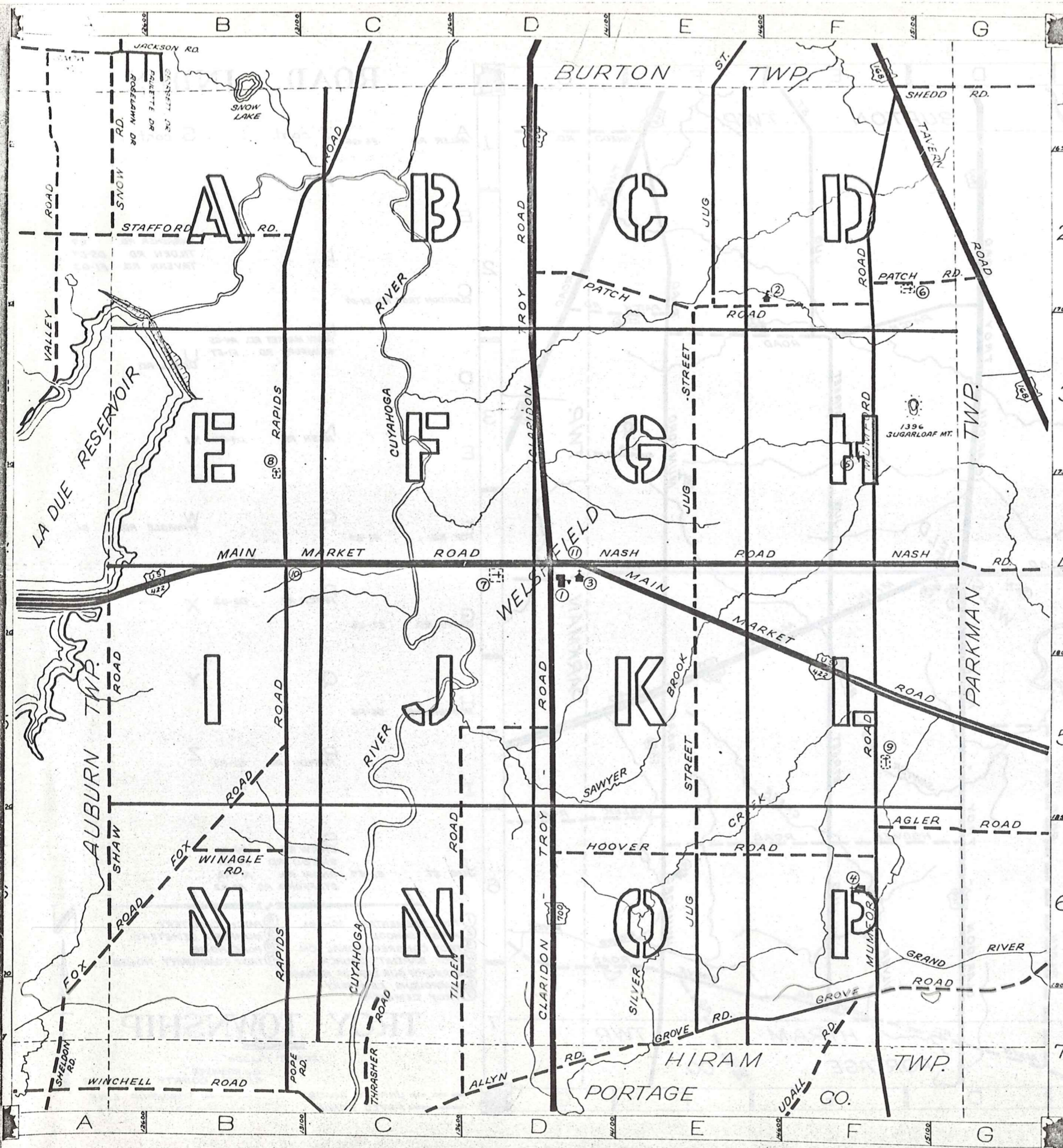


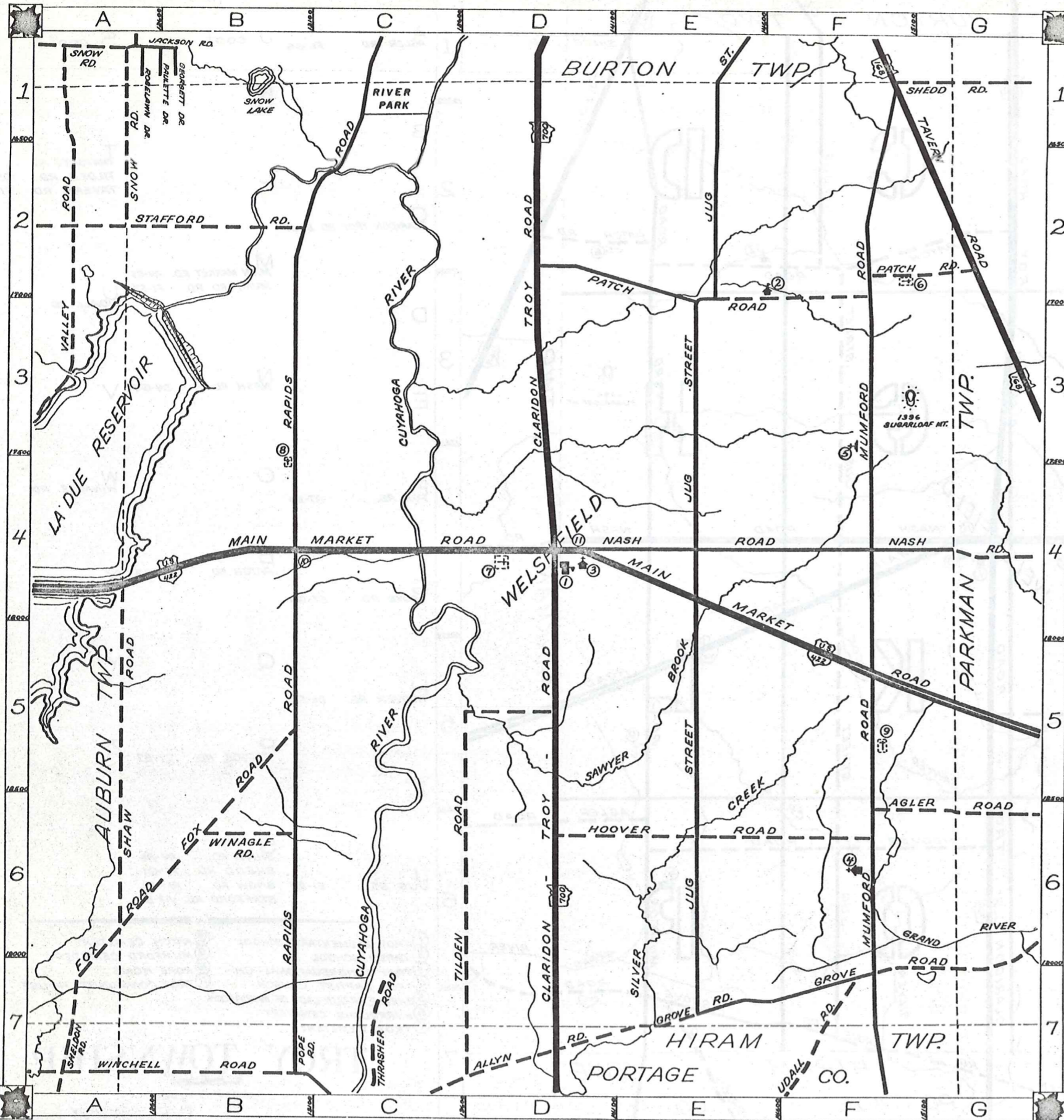
ROAD INDEX



1	A	AGLER RD. F6-G6	J cont.	S cont.
			K	
2	B		L	T THRASHER RD. C7 TILDEN RD. D5-D7 TAVERN RD. F1-G3
	C	CLARIDON TROY RD. D1-D7		
			M	MAIN MARKET RD. A4-G5 MUMFORD RD. F1-F7
3	D		U	UDALL RD. F7
	E		N	NASH RD. D4-G4
			V	
4	F	FOX RD. A7-B5	O	W WINAGLE RD. B6
			P	PATCH RD. D2-G2
	G	GROVE RD. E7-G6	X	
			Q	
5	H	HOOVER RD. D6-F6	Y	
			R	RAPIDS RD. C1-B7
			Z	
6	I		S	SHAW RD. A4-A6 SHEDD RD. F1-G1 SNOW RD. A1-A2 STAFFORD RD. A2-B2
	J	JUG ST. E1-E7		

- ① TROY ELEMENTARY SCHOOL
- ② AMISH SCHOOL
- ③ TROY CONGREGATIONAL CH.
- ④ TROY BAPTIST CHURCH
- ⑤ SHRINE OF OUR LADY OF MARIPOSA
- ⑥ BURROUGHS CEMETERY
- ⑦ TROY CEMETERY
- ⑧ PATCH CEMETERY
- ⑨ MUMFORD CEMETERY
- ⑩ POPE HOME
- ⑪ TROY COMMUNITY HOUSE

TROY TOWNSHIP
 SCALE: 1"=2000'
 CLYDE POMEROY
 GAUGA COUNTY ENGINEER
 --- TOWNSHIP LINE
 - - - COUNTY LINE



ROAD INDEX

A	AGLER RD. F6-G6	J cont.	S cont.
B		K	
C	CLARIDON TROY RD. D1-D7	L	T THRASHER RD. C7 TILDEN RD. D5-D7 TAVERN RD. F1-G3
D		M	U UDALL RD. F7
E		N	V
F	FOX RD. A7-B5	O	W WINAGLE RD. B6
G		P	X
H		Q	Y
I		R	Z
J	JUG ST. E1-E7	S	

- ① TROY ELEMENTARY SCHOOL
- ② AMISH SCHOOL
- ③ TROY CONGREGATIONAL CH.
- ④ TROY BAPTIST CHURCH
- ⑤ SHRINE OF OUR LADY OF MARIAPOCH
- ⑥ BURROUGHS CEMETERY
- ⑦ TROY CEMETERY
- ⑧ PATCH CEMETERY
- ⑨ MUMFORD CEMETERY
- ⑩ POPE HOME
- ⑪ TROY COMMUNITY HOUSE

TROY TOWNSHIP

SCALE: 1"=2000'

Q.J. ROBINSON
GEAUGA COUNTY ENGINEER

- UNPAVED ROADS
- PAVED ROADS
- TOWNSHIP LINE
- COUNTY LINE

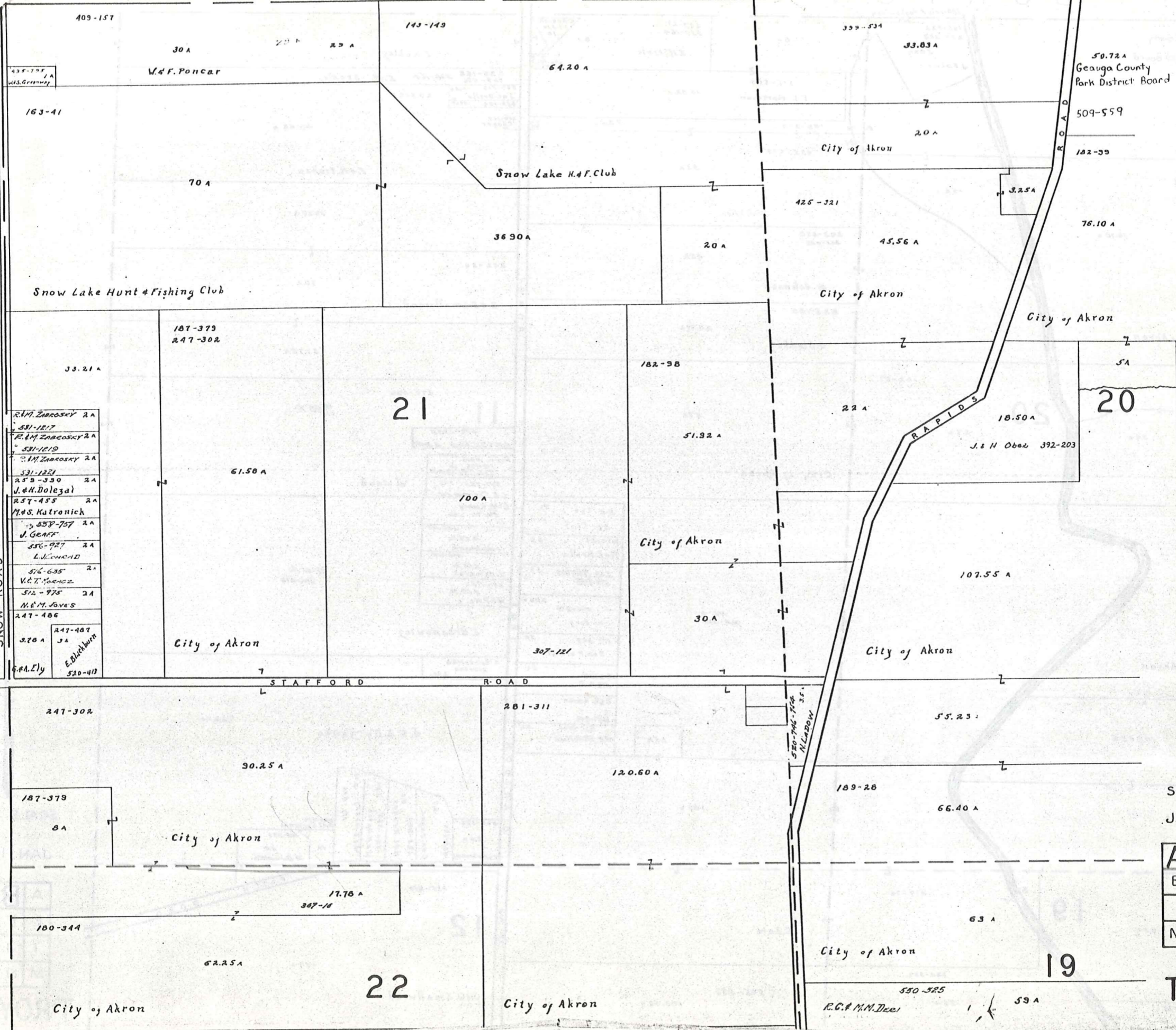


BURTON TOWNSHIP

TOWNSHIP

AUBURN

TROY TWP.



- 438-795 1A W.S. Greenway
- 163-41
- 70 A
- 33.21 A
- R.M. Zareosky 2A
- 531-1217
- R.M. Zareosky 2A
- 531-1219
- R.M. Zareosky 2A
- 531-1221
- 255-330 2A
- J. & H. Dolezal
- 257-455 2A
- M.S. Katronick
- 558-757 2A
- J. GEARF
- 556-927 2A
- L. J. CONRAD
- 516-635 2A
- V.C.T. FORCZ
- 512-975 2A
- N.E.M. GOVES
- 247-486
- 370 A
- 247-487 3A
- G.A. Ely
- E. Blackburn
- 520-413



SCALE 1" 300'
 JAN. 1975

A	B	C	D
E	F	G	H
I	J	K	L
M	N	O	P

TROY TWP.
 413

BURTON TOWNSHIP

Geauga County
Park District Board
509-559

50.72 A

180-140 F. Poplawsky
193-512
189-308
J. Kazar

443-21
330-164
E.M. Steele

423-963

I. Robley

226-166 530-164 E.M. Steele,
263-25
Joc. Brilla
228-189

40.46 A

F. & H. Truhan

30.20 A

232-34

30 A

D. & E. Smallwood

37.75 A

374-450

11.45 A

556-1335
C.R. & S.C. Wood

D. & K. Wood
513-145
515-31
551-723 1.75
L.L. CATERLANO

W. Wood

L.M. Kenney
470 74 2.84

384-120
2.53 Ac
A. Malenssch

57.41 Ac.
206-470

2.53 Ac.
E. Malenssch

453-722
2.53 Ac.
W.P. Heis

S. Urbanowicz

S. Burzanko
212-444 2 Ac.

J. & S. Burzanko

72.0 Ac.

310-721 3A
J.G. Faust
270-01 3A
M. & E. Brilla
314 TAKACS
574-1153
3A
444-374 3.03 A
A. Berg
410-558 3A
R. & M. Marchetti
3A
M. Litch
278-4-5
3A
J. & F. Kavan
509-518
551-1063 3A
M.E. KA. HALL

116 A
304-510

1.5 A

101 A

C. Zale

12

J. & W. Smallwood

157 A

19

417-70

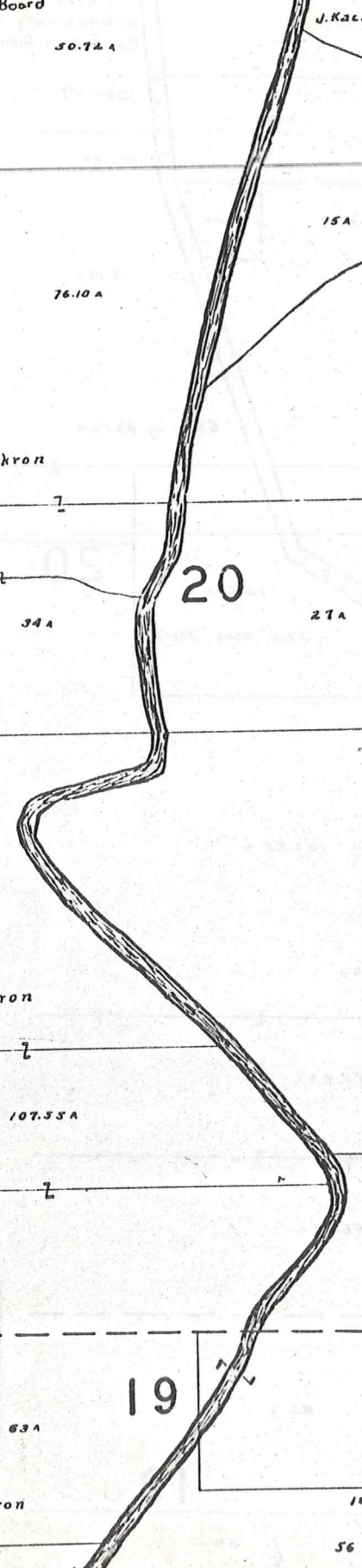
104-330

56 A
City of Akron

505-598

J. Kozak

103.50 A



SCALE 1" = 300'

JAN. 1975

A	B	C	D
E	F	G	H
I	J	K	L
M	N	O	P

TROY TWP

414

550-325
39 A
R.C. & M.M. Deak

102-99

76.10 A

15 A

203-450
361-633

45 A

M. Johnson

225-193

20.71 A

U. Sladkey

102-97

47 A

City of Akron

City of Akron

3A

34 A

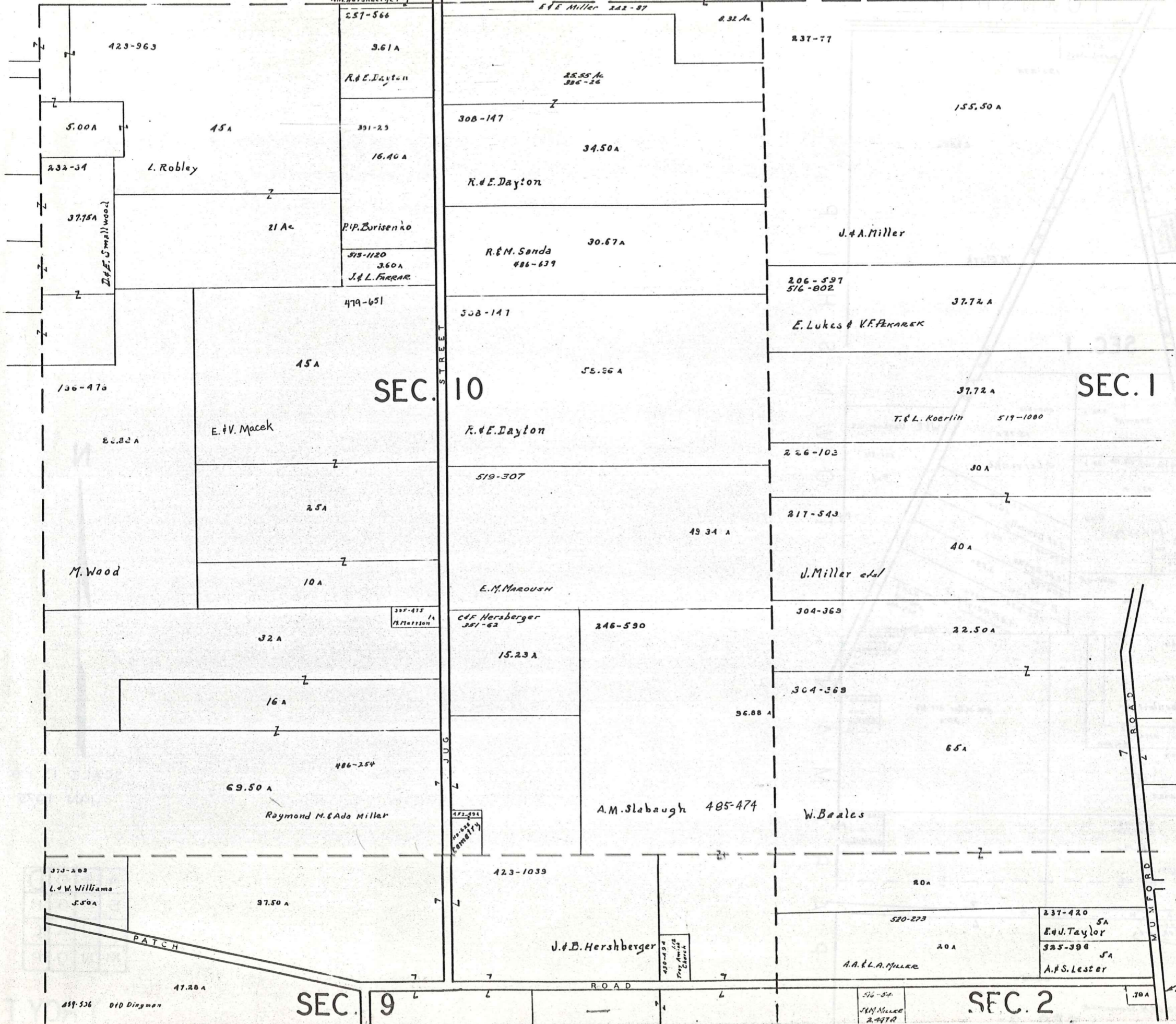
27 A

City of Akron

107.55 A

63 A

City of Akron

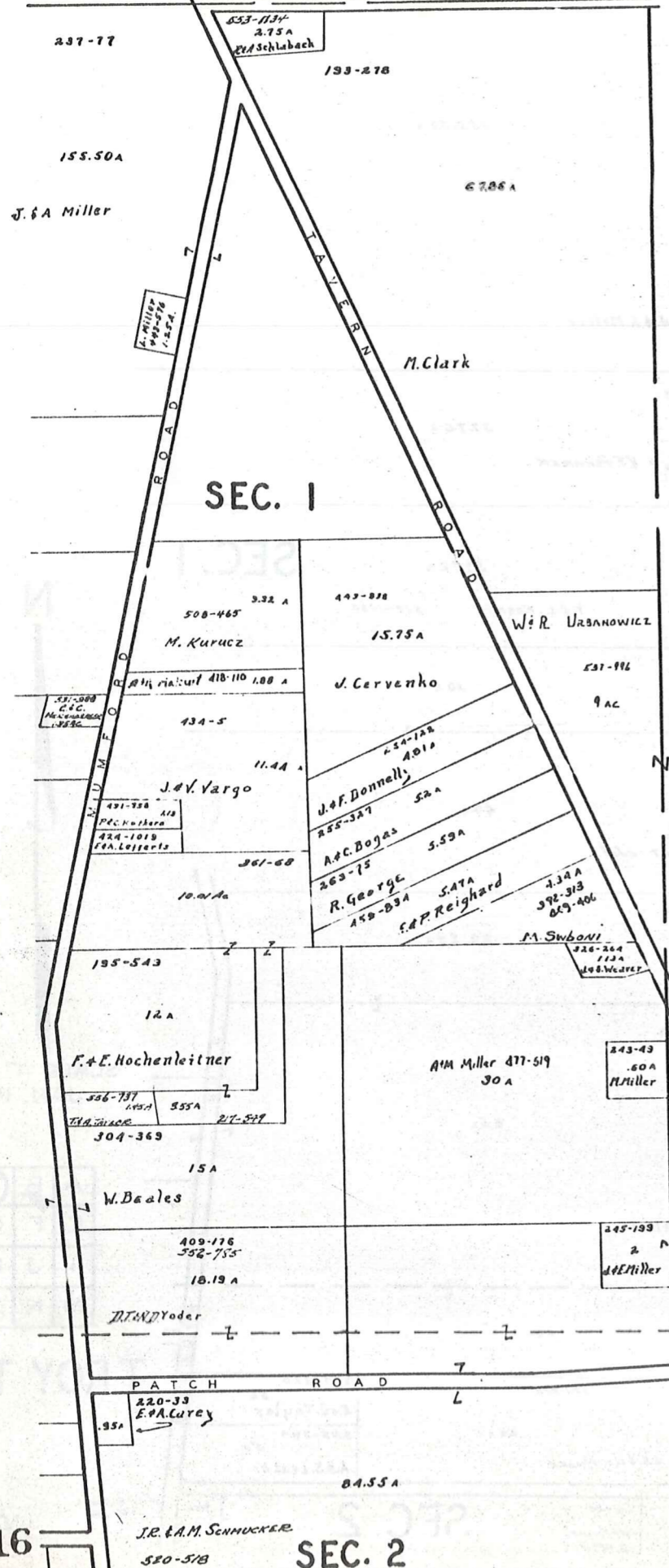


SCALE 1" = 300'
JAN. 1975

A	B	C	D
E	F	G	H
I	J	K	L
M	N	O	P

TROY TWP

BURTON TOWNSHIP



BURTON TOWNSHIP



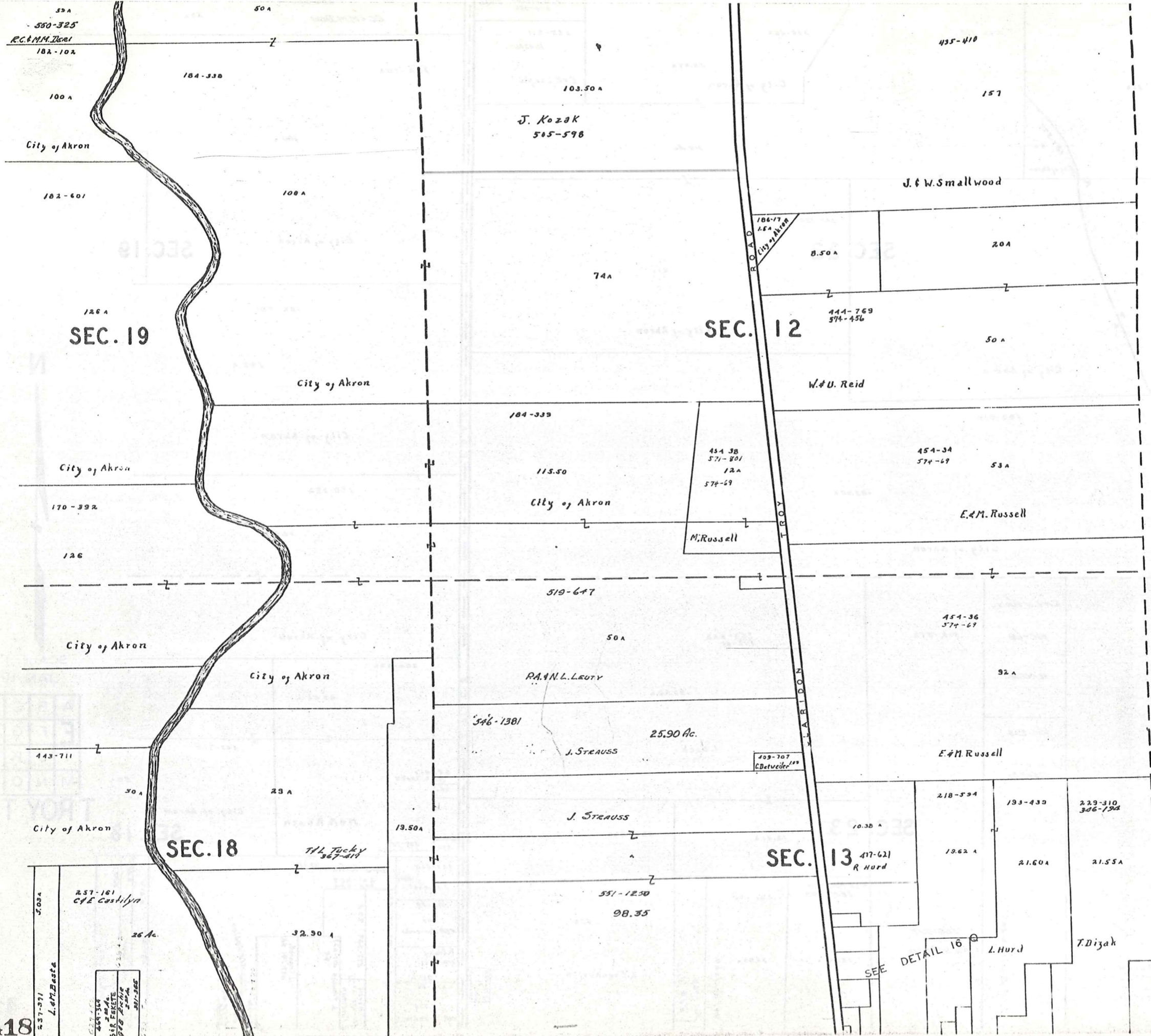
SCALE 1" = 300'
JAN. 1975

A	B	C	D
E	F	G	H
I	J	K	L
M	N	O	P

416

J.R. & A.M. SCHUCKER
580-518
SEC. 2

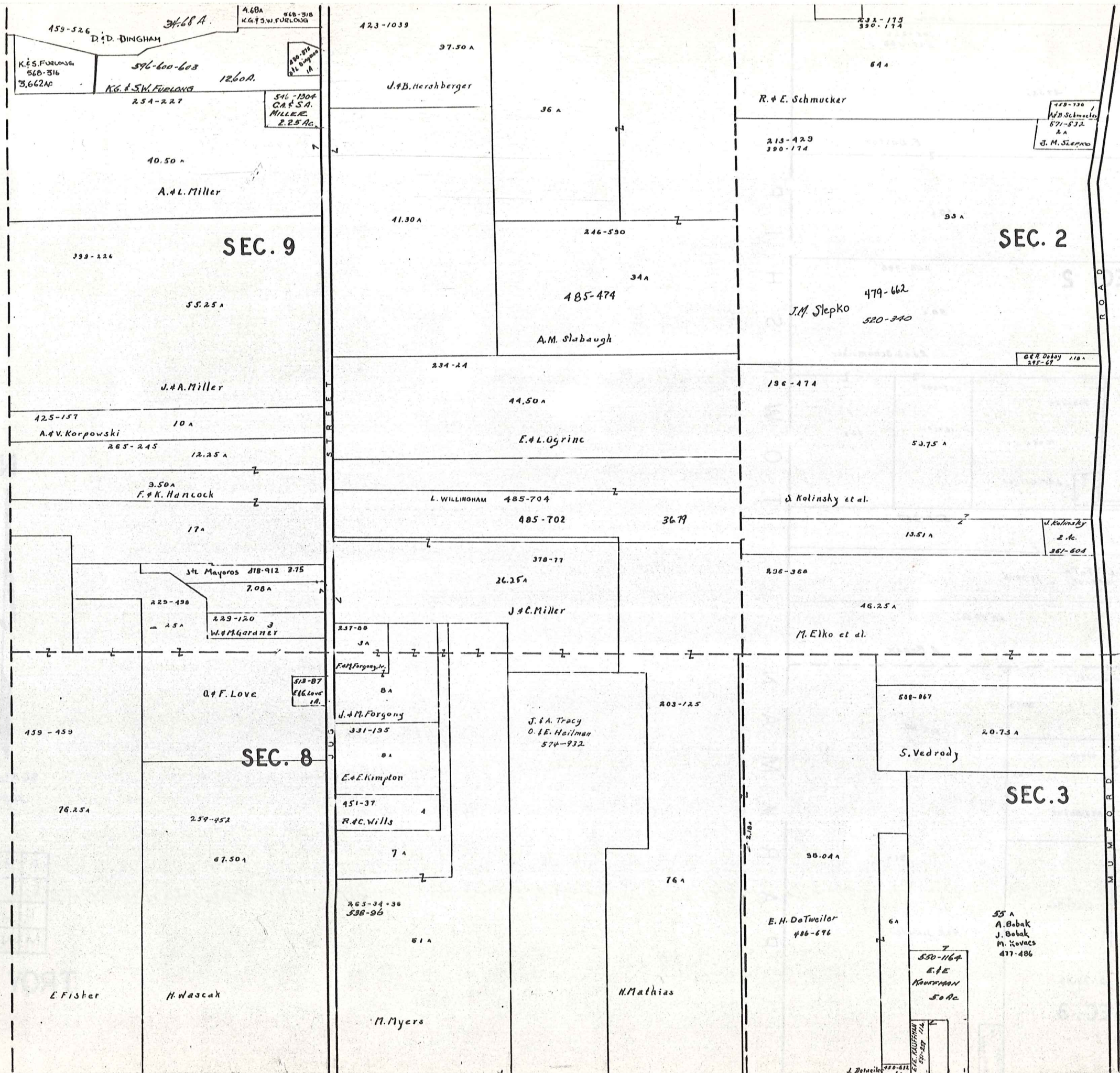
T ROY TWP



SCALE 1" = 300'
JAN. 1975

A	B	C	D
E	F	G	H
I	J	K	L
M	N	O	P

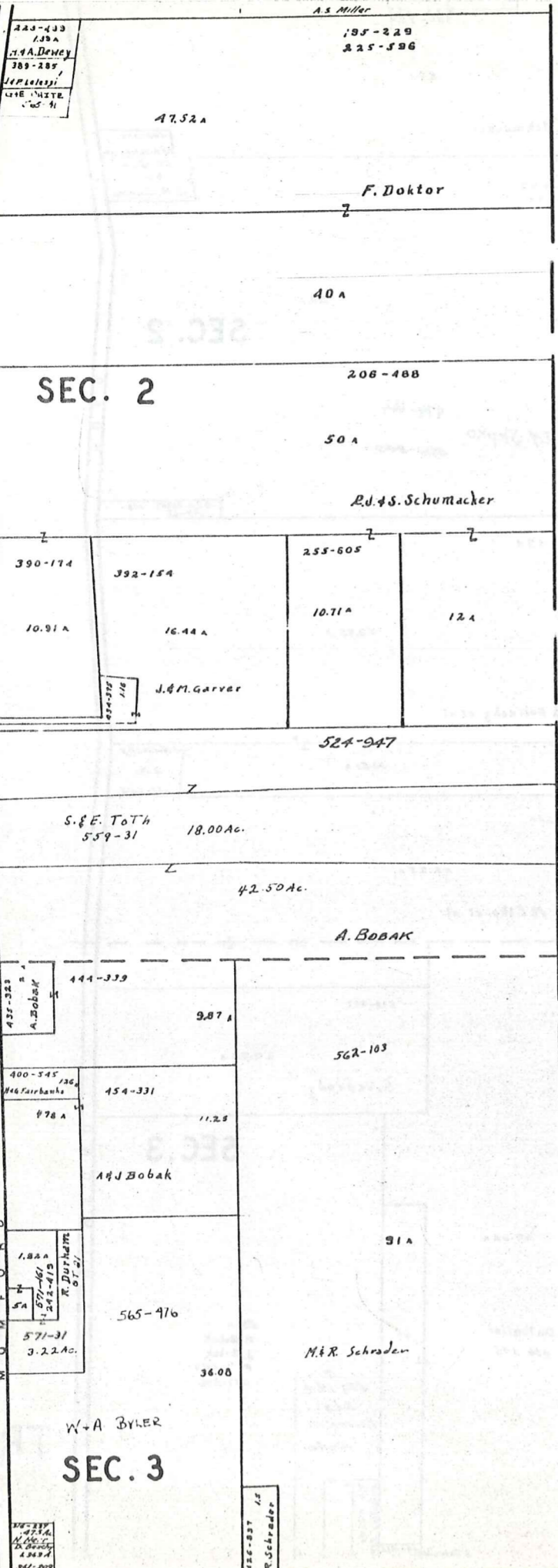
TROY TWP.



SCALE 1" = 300'
 JAN. 1975

A	B	C	D
E	F	G	H
I	J	K	L
M	N	O	P

TROY TWP.



SCALE 1" = 300'
JAN. 1975

A	B	C	D
E	F	G	H
I	J	K	L
M	N	O	P

TROY TWP.

A U B U R N T O W N S H I P

780-638
260-231
221-50
H & D Schultealbert
505-393
37-542 Ac.
L. & F. Little
A. C. Malinowski
37.334
City of Akron
422

SEC. 23

169-14
524-261
514-469
104.70 A
515-515
49.45 A
E. L. ZIRHEL
515-513
41.07 A
E. L. ZIRHEL
A. Bond et al.

13A
254-232
13A
R. Nacc
25.50 A
218-172
13A
M. M. Sopjack
4.97 A
28.97 A

DEC. 18 1885
SA
577-9
377-88
1A
R. H. G. M.

SEC. 18

192-114
121.75 A
Geauga Co. Lumm.
170-354
42.25 A
A. Soika
272-532
48.86 A
E. Brigham
184-567
33.20 A
City of Akron
6.80 A
251-540
D. F. Kubista

128-171
247-483
265-214
70 A
D. & R. Shaw
13A

556-326
100.54 A
M. & A. Manning
255-277

320-130
114A
R. Platjak
589-111
162Ac.
231-527
562-343
3.63 A
L. Marek
D. Hranick SA
532-519
SA
345-392
E. Eariko
M. SMIER 537-910 2.9 A
282-552
16.35 A
L. Guopar
City of Akron
67
187-265
37.78 A

SEC. 24

G. J. HACH 20 Ac.
551-609
10.0 Ac.
559-118
L. & V. WEBBER
23.5 Ac.
559-1165
431-701
R. Hull
53.50 A
556-428
133.96 Ac.
E. R. ISMOND

68.22 A
L. & M. Ridehour
223-334
33.05 A
S. & V. Kralik
373-306
16 A
L. Whitney
100-2
103 A
S. Hull

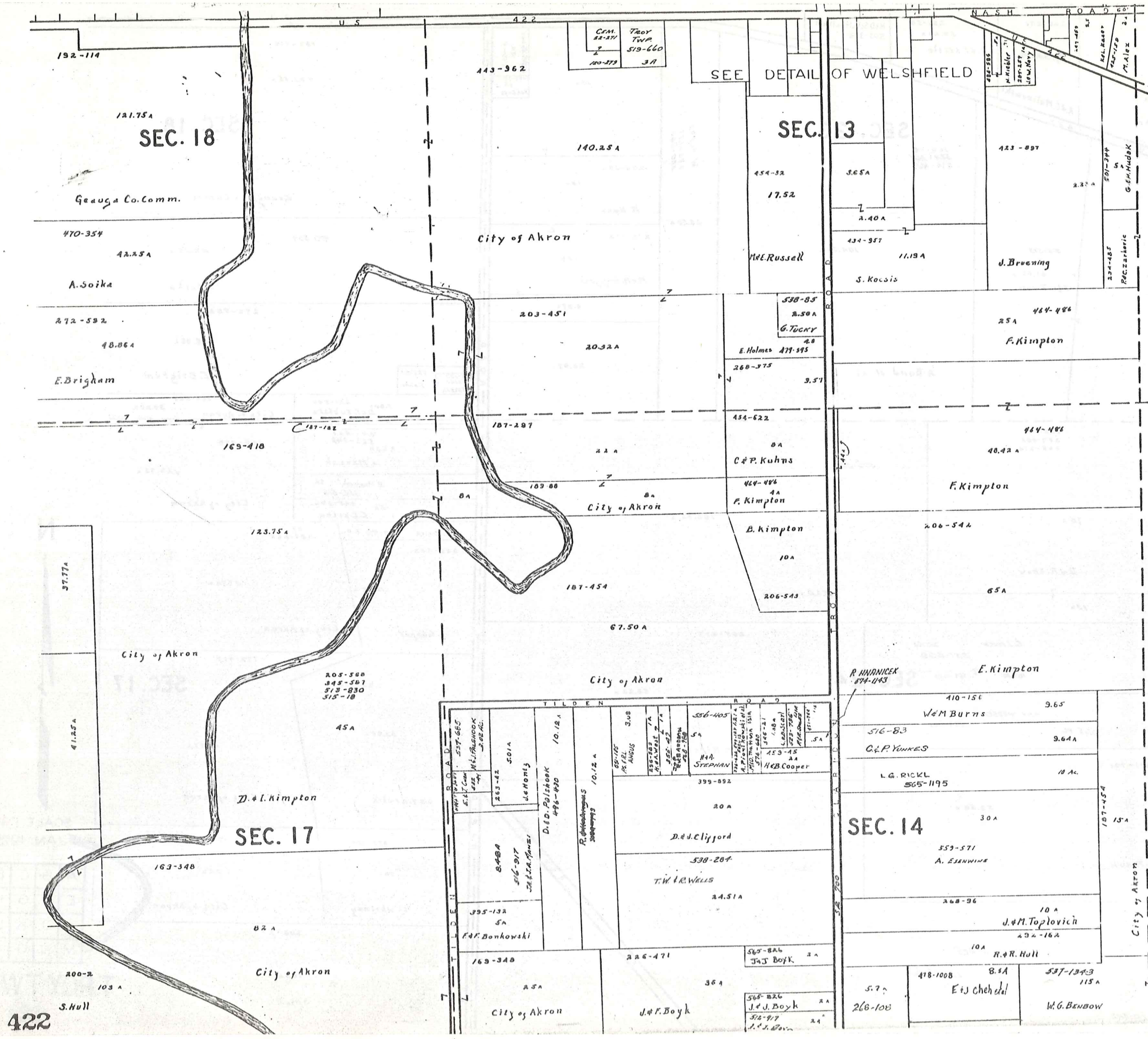
SEC. 17
179-465
41.25 A
City of Akron
182-177
24 A
City of Akron
200-2
103 A
S. Hull



SCALE 1"=300
JAN. 1975

A	B	C	D
E	F	G	H
I	J	K	L
M	N	O	P

TROY TWP.
421



CRM. 22-27
Troy TWP. 519-660
100-379 3A

SEE DETAIL OF WELSHFIELD

SEC. 18

SEC. 13

SEC. 17

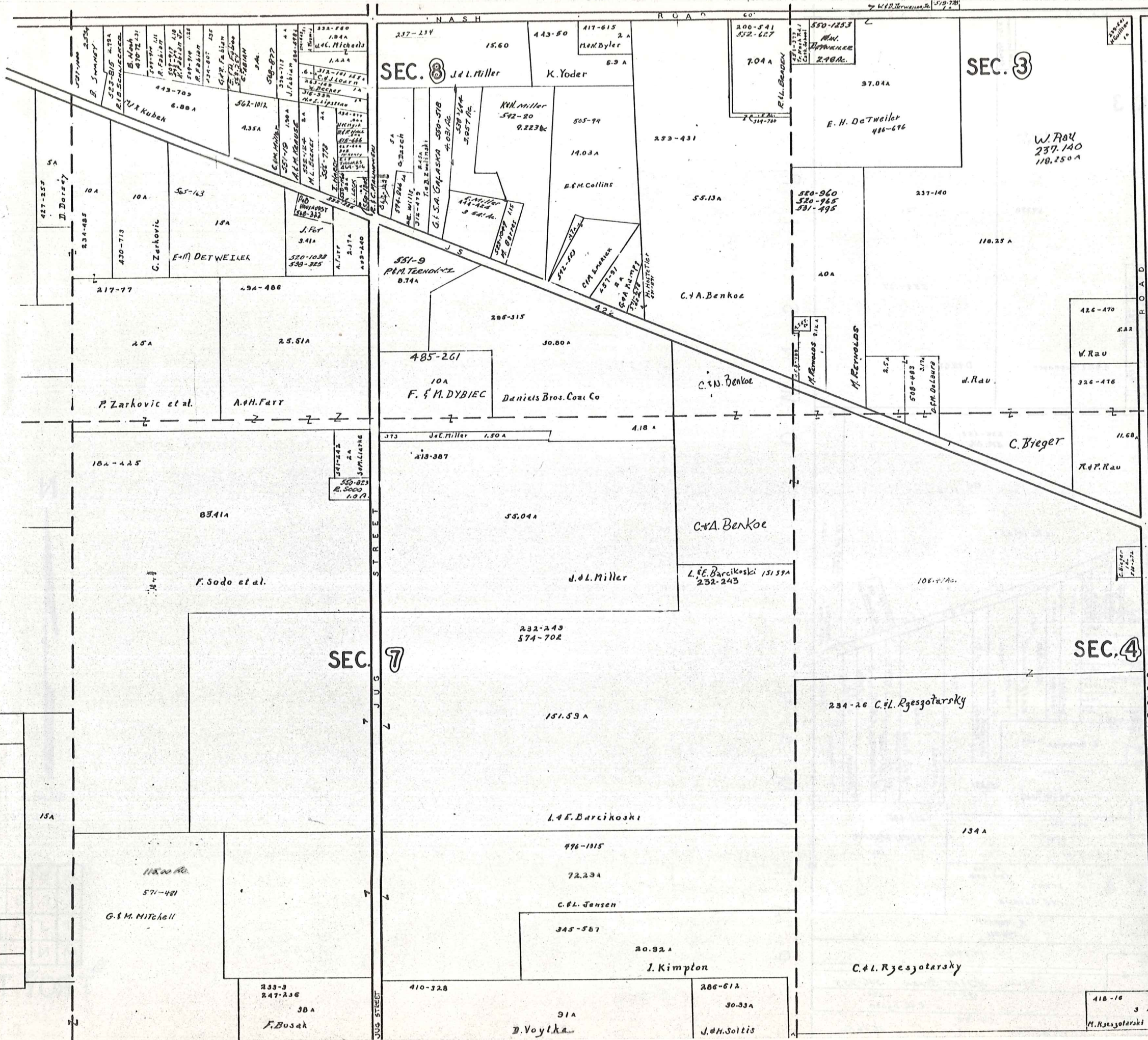
SEC. 14



SCALE 1" = 300'
JAN. 1975

A	B	C	D
E	F	G	H
I	J	K	L
M	N	O	P

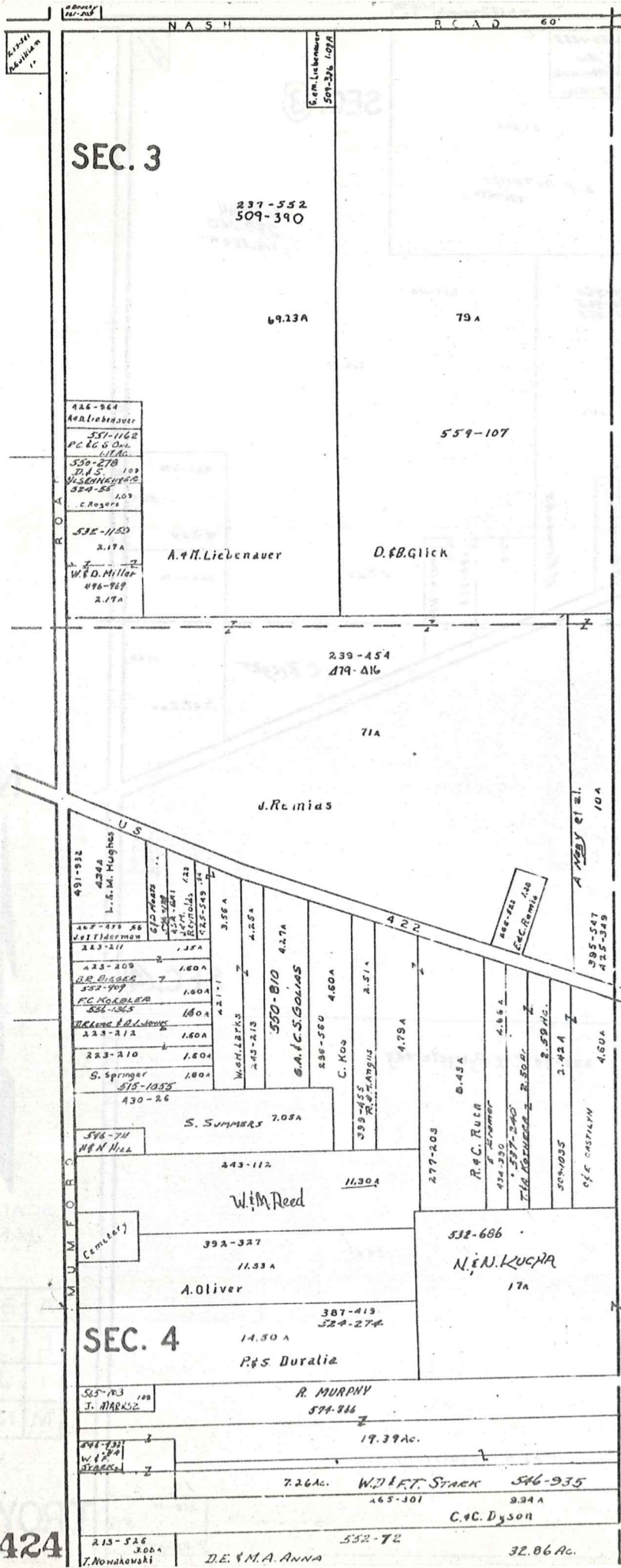
TROY TWP.



SCALE 1" = 300
JAN. 1975

A	B	C	D
E	F	G	H
I	J	K	L
M	N	O	P

TROY TWP.
423

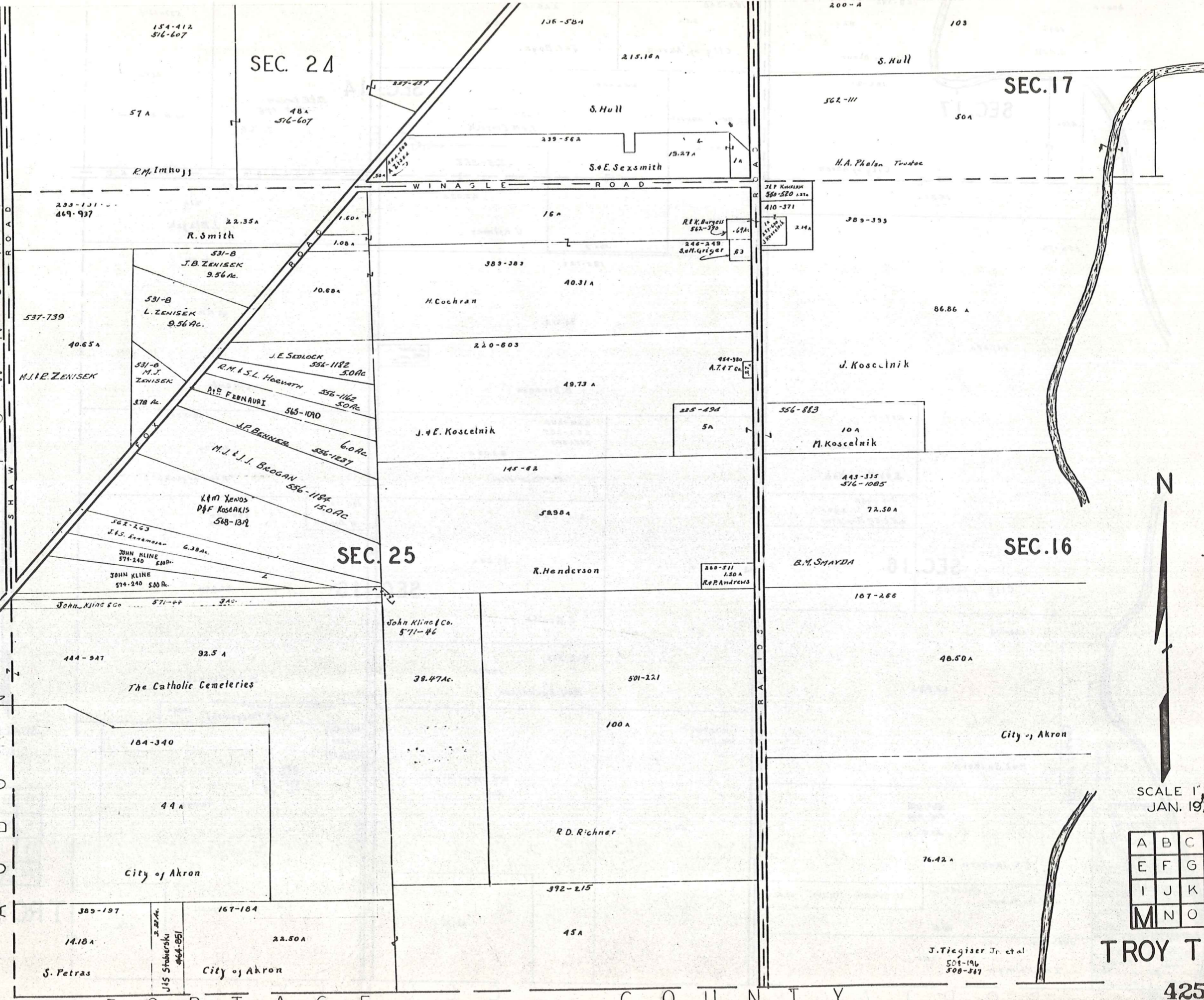


SCALE 1" = 300'
 JAN. 1975

A	B	C	D
E	F	G	H
I	J	K	L
M	N	O	P

TROY TWP

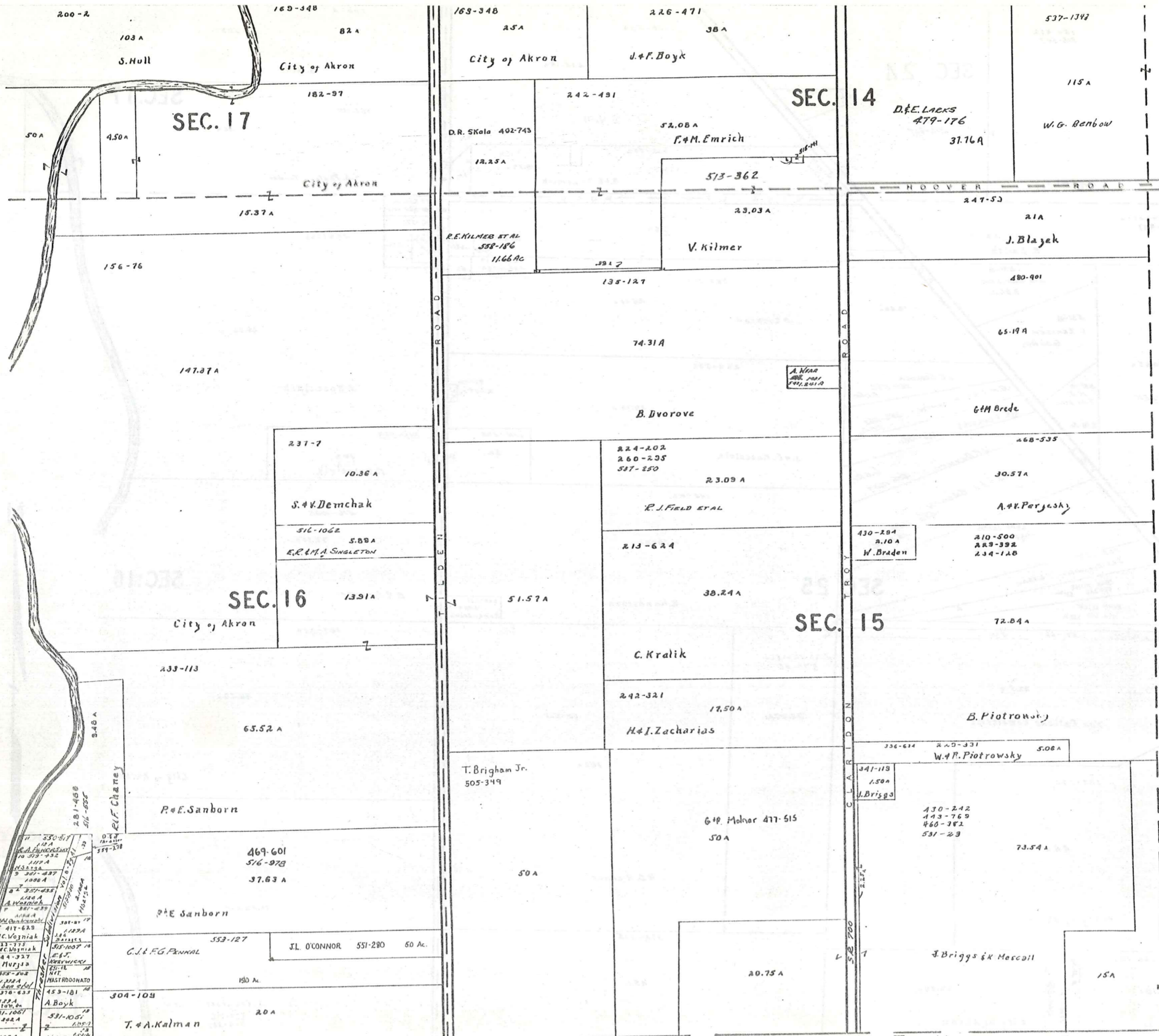
P
H
O
W
N
S
H
A
W
R
O
A
D
N
Z
A
U
B
U
R
N
T
O
W
N
S
H
I
P



SCALE 1" = 300'
JAN. 1975

A	B	C	D
E	F	G	H
I	J	K	L
M	N	O	P

TROY TWP.



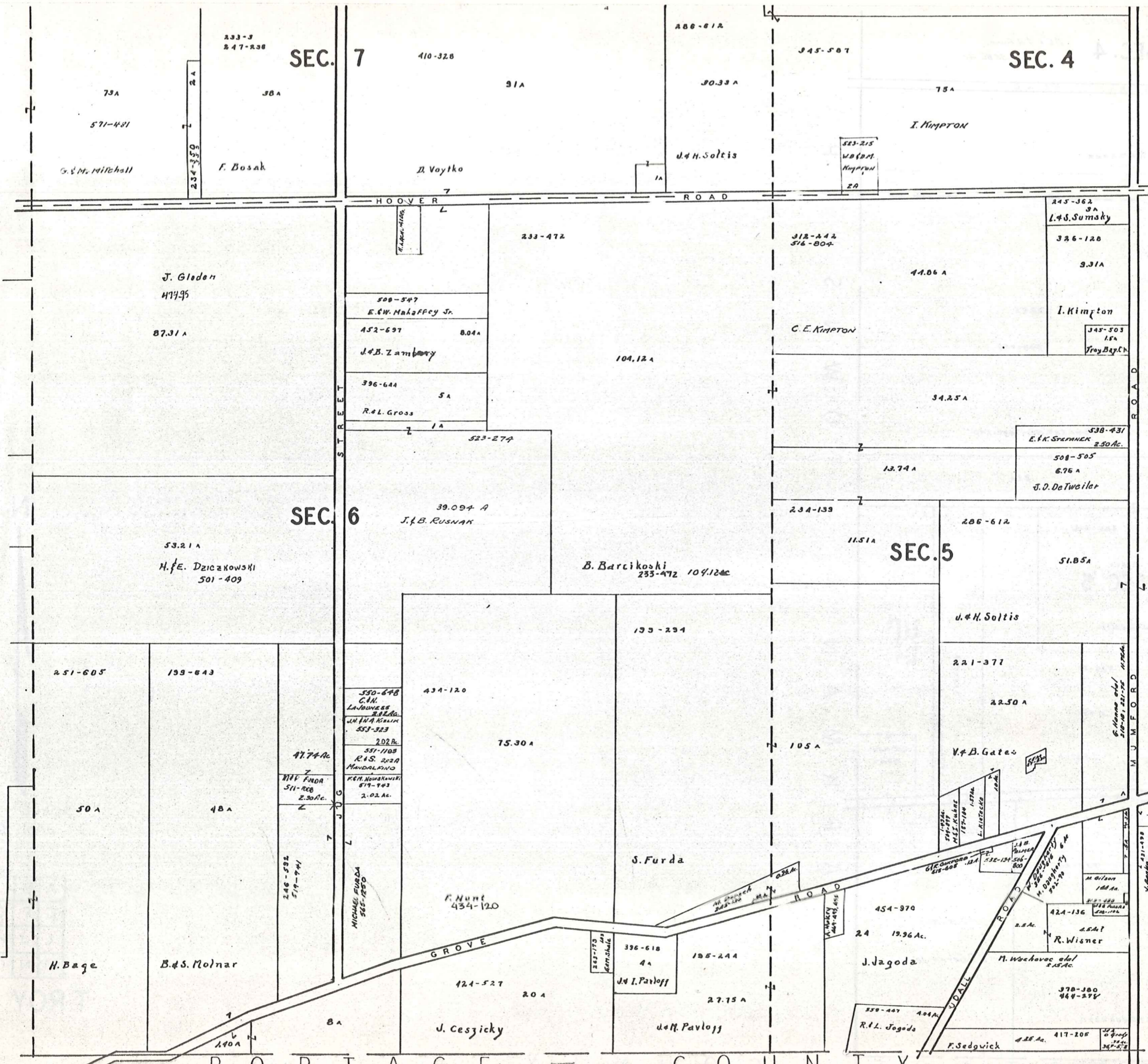
SCALE 1" = 300'
JAN. 1975

A	B	C	D
E	F	G	H
I	J	K	L
M	N	O	P

TROY TWP.

426

11	250-511	112 A	W. J. ...
12	103 A	103 A	S. Hull
13	103 A	103 A	S. Hull
14	103 A	103 A	S. Hull
15	103 A	103 A	S. Hull
16	103 A	103 A	S. Hull
17	103 A	103 A	S. Hull
18	103 A	103 A	S. Hull
19	103 A	103 A	S. Hull
20	103 A	103 A	S. Hull
21	103 A	103 A	S. Hull
22	103 A	103 A	S. Hull
23	103 A	103 A	S. Hull
24	103 A	103 A	S. Hull
25	103 A	103 A	S. Hull
26	103 A	103 A	S. Hull
27	103 A	103 A	S. Hull
28	103 A	103 A	S. Hull
29	103 A	103 A	S. Hull
30	103 A	103 A	S. Hull
31	103 A	103 A	S. Hull
32	103 A	103 A	S. Hull
33	103 A	103 A	S. Hull
34	103 A	103 A	S. Hull
35	103 A	103 A	S. Hull
36	103 A	103 A	S. Hull
37	103 A	103 A	S. Hull
38	103 A	103 A	S. Hull
39	103 A	103 A	S. Hull
40	103 A	103 A	S. Hull
41	103 A	103 A	S. Hull
42	103 A	103 A	S. Hull
43	103 A	103 A	S. Hull
44	103 A	103 A	S. Hull
45	103 A	103 A	S. Hull
46	103 A	103 A	S. Hull
47	103 A	103 A	S. Hull
48	103 A	103 A	S. Hull
49	103 A	103 A	S. Hull
50	103 A	103 A	S. Hull



SEC. 7

SEC. 4

SEC. 6

SEC. 5



SCALE 1" = 300'
JAN. 1975

A	B	C	D
E	F	G	H
I	J	K	L
M	N	O	P

TROY TWP.
427

Ag. 451-375, 11
Nowakowski
320-225
K. D. Cjola
553-1132
F. J. Czack
2.76 Ac.

552-72

SEC. 4

D.E. & M.A. Anna
32.86 Ac.

ALGER ROAD

451-19

D.E. Anna

335-31
1120 A
HAR. HEDRICK

100.6A

508-459

232-220
1.2A
J. Patterson

Tom-Lee Heritage Inc.

304-542
1.12A
E. M. Redmond

21A

206-612

SEC. 5

J.H. Soltis

237-76

31.77A

B. Gates

M. J. A

233-733

J. Steele et al

558-271
558-320
D. Gates
2.0A

558-324
4.02A

G. Hanna et al
11.26 Ac.
210-19, 21, 22, 25

MUMFORD ROAD

307-281
2.15A
Mad. Edwards

431-340
1.2A
V. J. Anderson
511-713

G. M. McEwan

1.20A

E. B. B. B.

431-156
485-184
577-605

335-23

45.05A

52.50A

V.D. Gates, Jr.

M.A.D. Johnson

P
A
R
K
M
A
N
T
O
W
N
S
H
I
P

428

P O R T A G E T C O U N T Y



SCALE 1" 300'
JAN. 1975

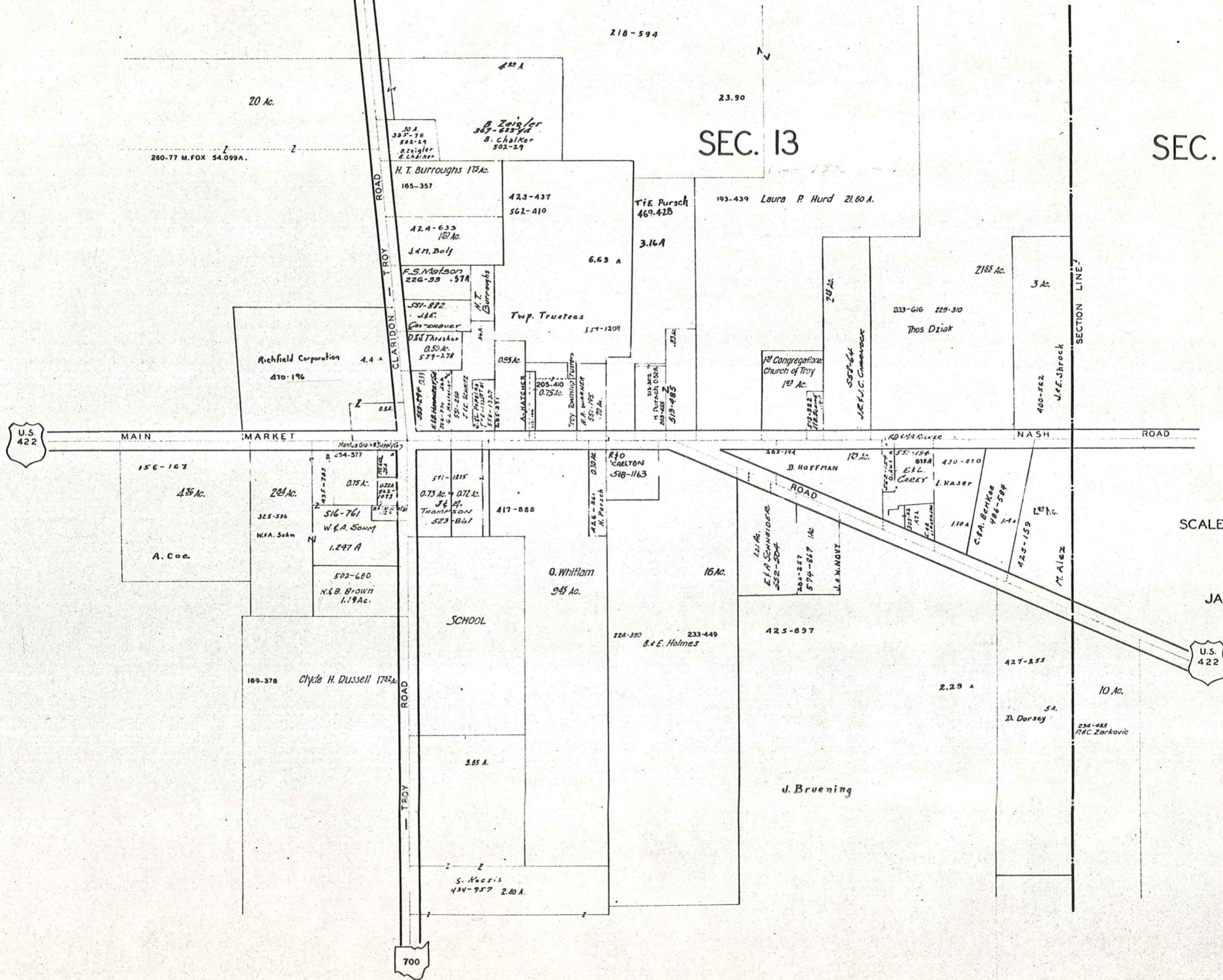
A	B	C	D
E	F	G	H
I	J	K	L
M	N	O	P

TROY TWP.

WELSHFIELD
SEC. 13

TROY TP.

WELSHFIELD
SEC. 13



SEC. 8

SCALE 1 in. = 25 ch. = 165 ft.

JAN. 1, 1975

